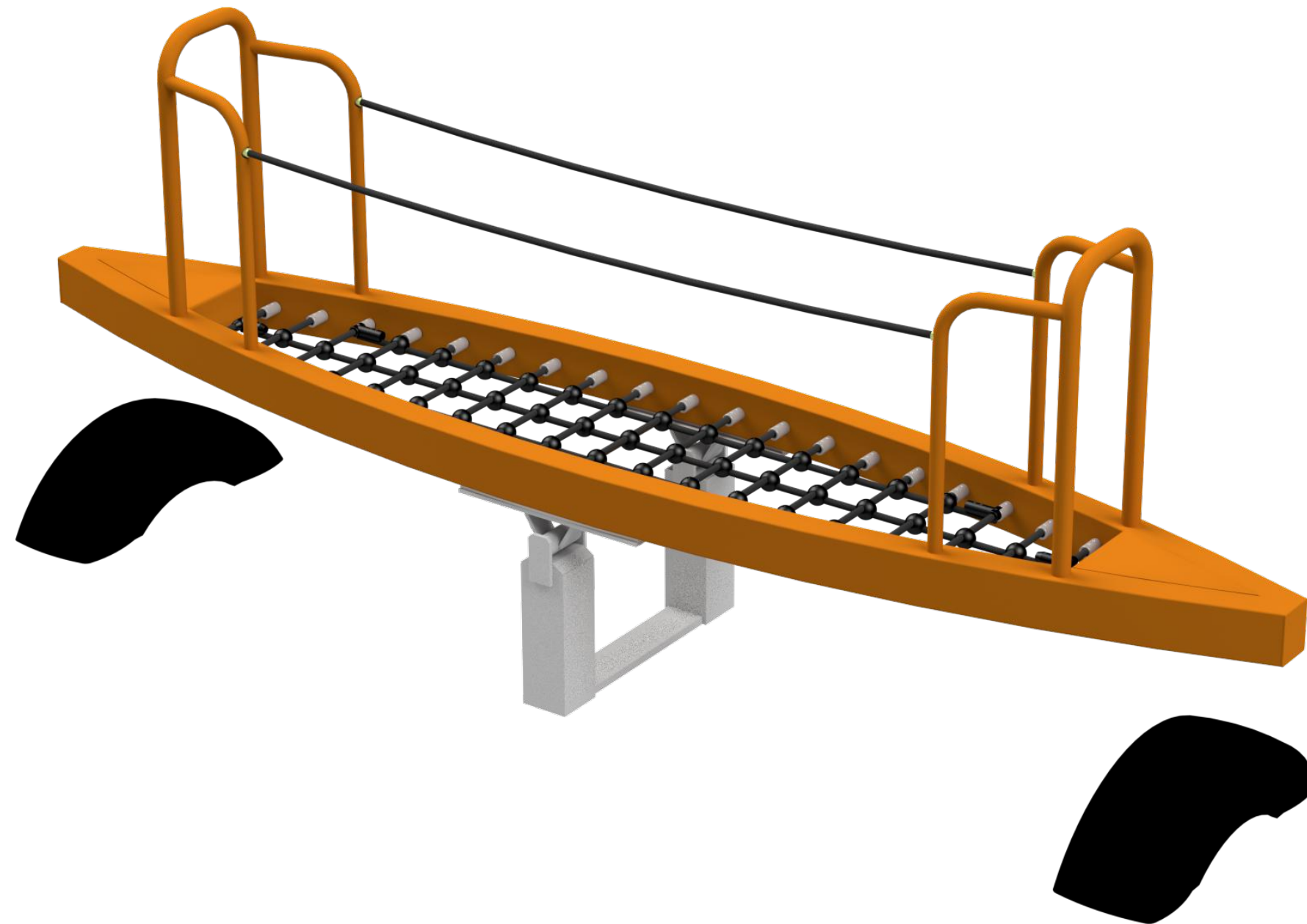
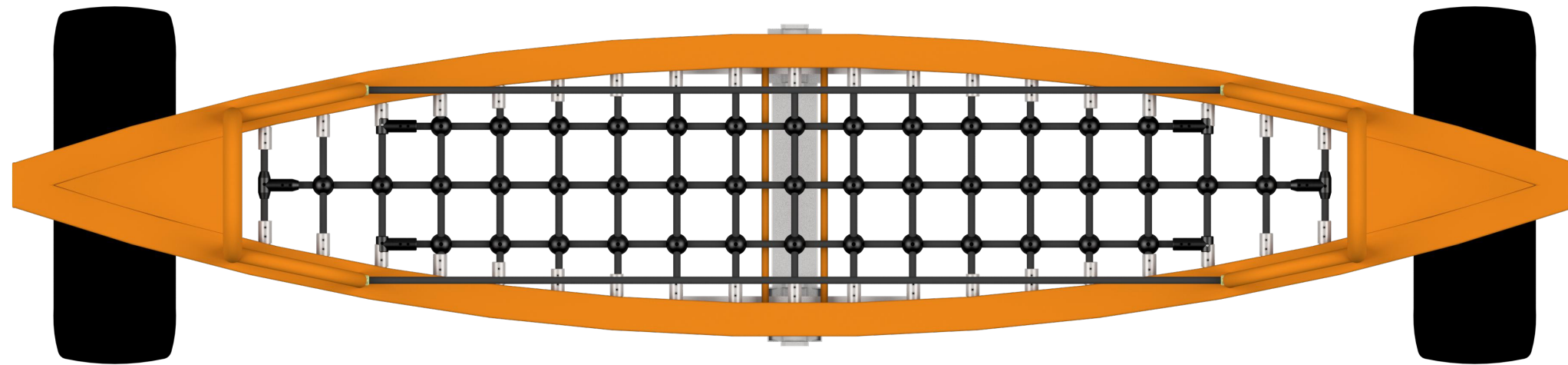


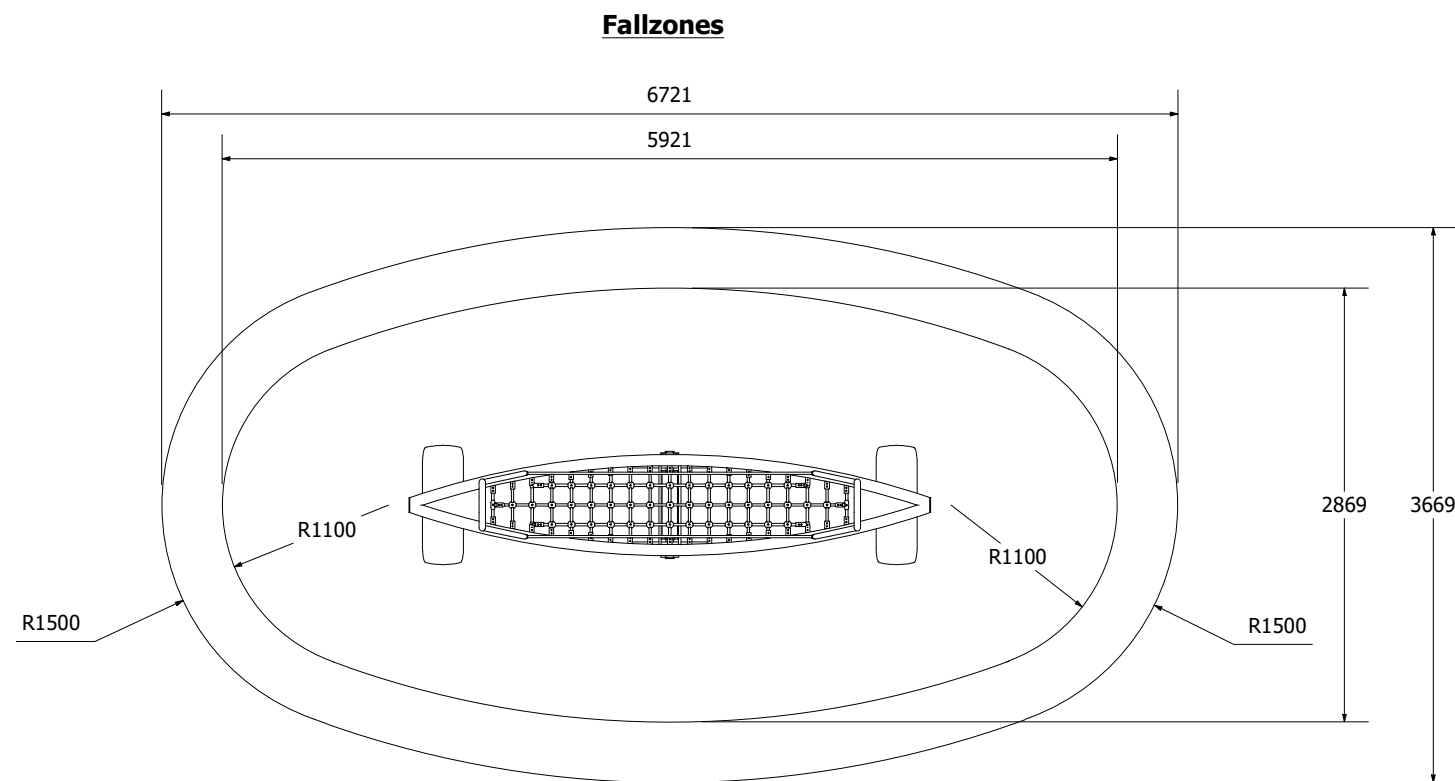
MP Mokihi See Saw



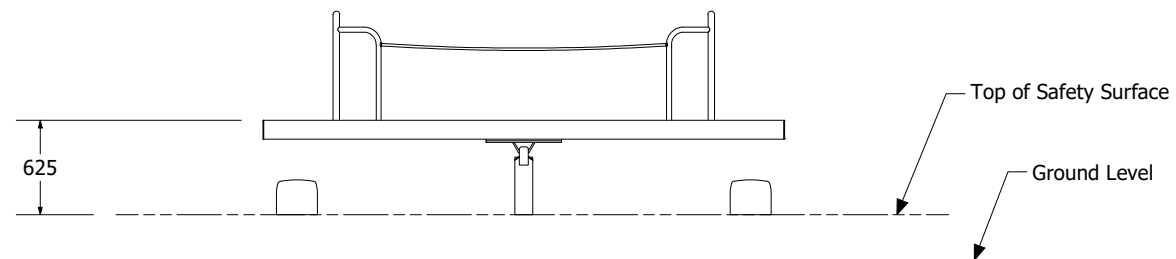
MP Mokihi See Saw



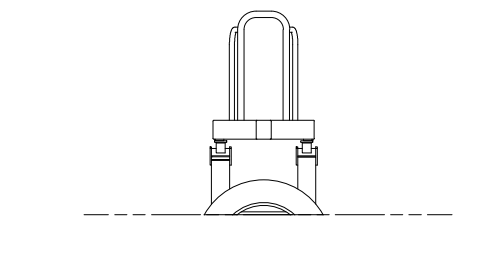
1 : 50 @ A3



Front Elevation



Right Elevation



Technical Information	
Main Dimension	6721 x 3669mm
Total Area	24.7m ²
Max FHO	700mm<
Heaviest Part	-
Compliant to	NZS 5828:2015 AS 4685:2021 EN 1176:2017