

playground
centre® 

PGC Smart Playgrounds

► Play ► Games ► Connect



Want to turn screen
time into green time?

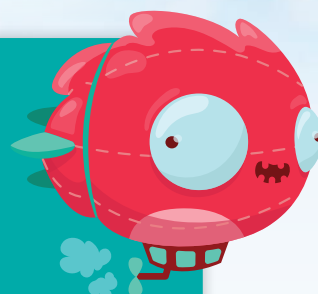
It's time to get excited about the
amazing ways that technology can
inspire outdoor, active fun.

PGC Smart Playgrounds

►Play ►Games ►Connect

PGC Smart Playgrounds, by Playground Centre, use technology to inspire active outdoor fun.

Including everything from electronic, multisensory equipment to smartphone games – our smart playgrounds have a common goal: to get kids moving, thinking and interacting in remarkable new ways.

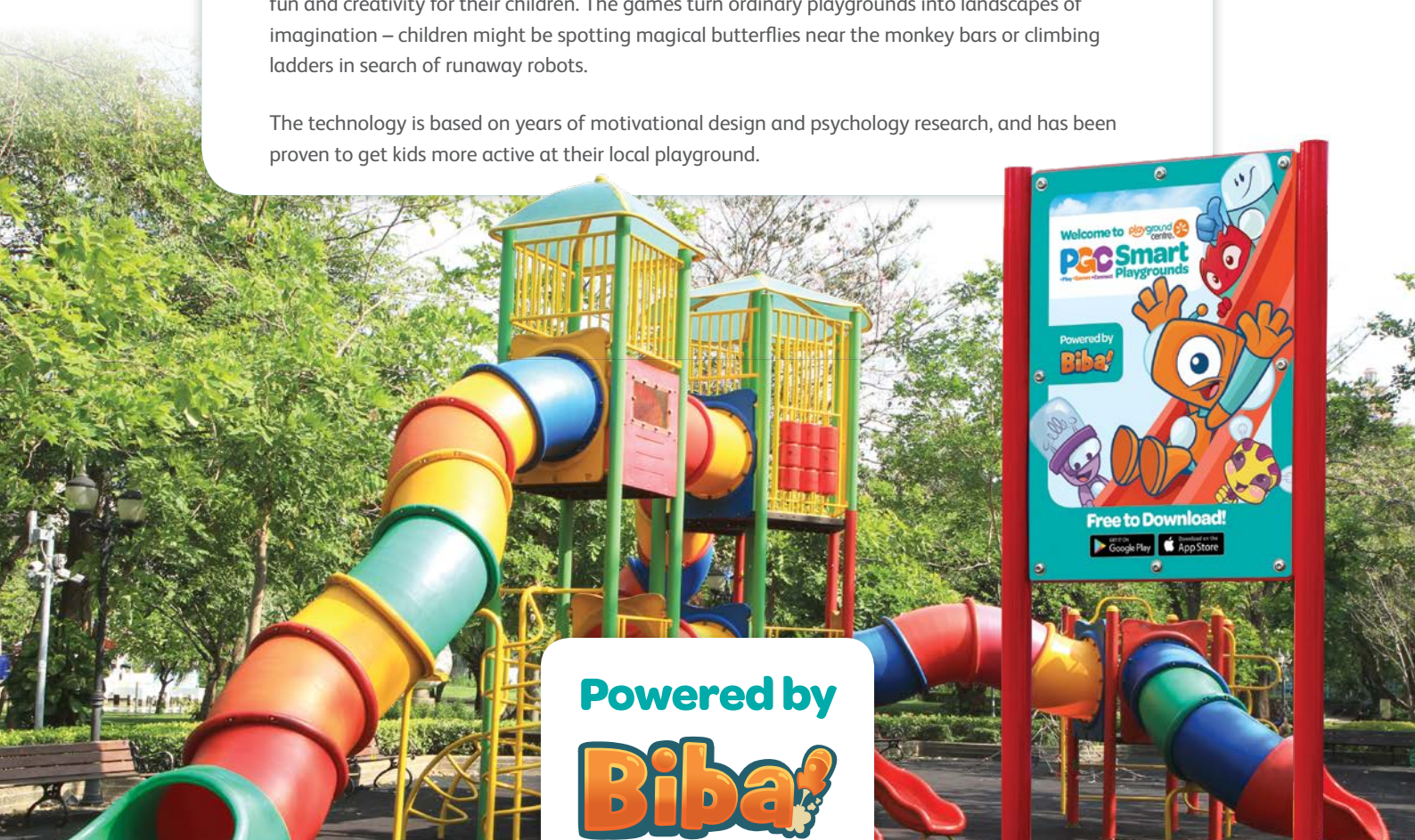


Benefits of outdoor exercise + excitement of smartphone games

The PGC Smart Playgrounds now boast Biba mobile technology and augmented reality markers that combine active play equipment with imaginative mobile games.

Parents can download free games via the Biba Playground Games App to unlock a world of fun and creativity for their children. The games turn ordinary playgrounds into landscapes of imagination – children might be spotting magical butterflies near the monkey bars or climbing ladders in search of runaway robots.

The technology is based on years of motivational design and psychology research, and has been proven to get kids more active at their local playground.



Powered by
Biba!

How do the games **work**?

A parent or carer holds their phone and controls the game by giving children instructions around an imaginary scenario.



Kids spend most of the game away from the adult, using the playground equipment to achieve their in-game goals. However, they have to return to the phone (and parent) from time-to-time to meet goals, complete mini-games or unlock new levels.

For example, *Biba Drive* has children completing laps of a racetrack and taking 'pit stops' with their parent to 'refuel' using the phone. In *Dino Dig*, kids take on the role of an archaeologist, crawling through tunnels and climbing ladders to reach 'dig sites' before using the phone to uncover dinosaur bones.

Games are always free to play, and are available for both Apple and Android phones.



In addition to *Dino Dig* and *Biba Drive*, some of our most popular Smart Playground games are:



Children search for baby robots across the playground and bring them back to the phone for grooming and care.



The phone becomes a virtual baton for a multi-player relay throughout the playground. Fun for the whole family!



A twist on an old favourite, Go Seek lets 'seekers' take fun, customisable photos of family members when they find them.



All inclusive game

This fantasy adventure has kids traversing a magical forest in search of a rare golden butterfly. Based on inclusive design principles, this game is ideal for children on the autism spectrum.



The classic party game gets a smart upgrade. Shaking the phone generates a charade idea, which children have to act out using a piece of playground equipment.



It's **smarter** than you think!



Community health, building stronger families, and encouraging the use of public facilities are all key priorities for councils.

PGC Smart Playgrounds support these priorities by offering new reasons to enjoy the outdoors for a greater number of people. Families are encouraged to play together, choose the outdoors in preference to indoor screen time, and get active. This is particularly important with obesity on the rise and research proving that activity boosts mental and physical well-being.



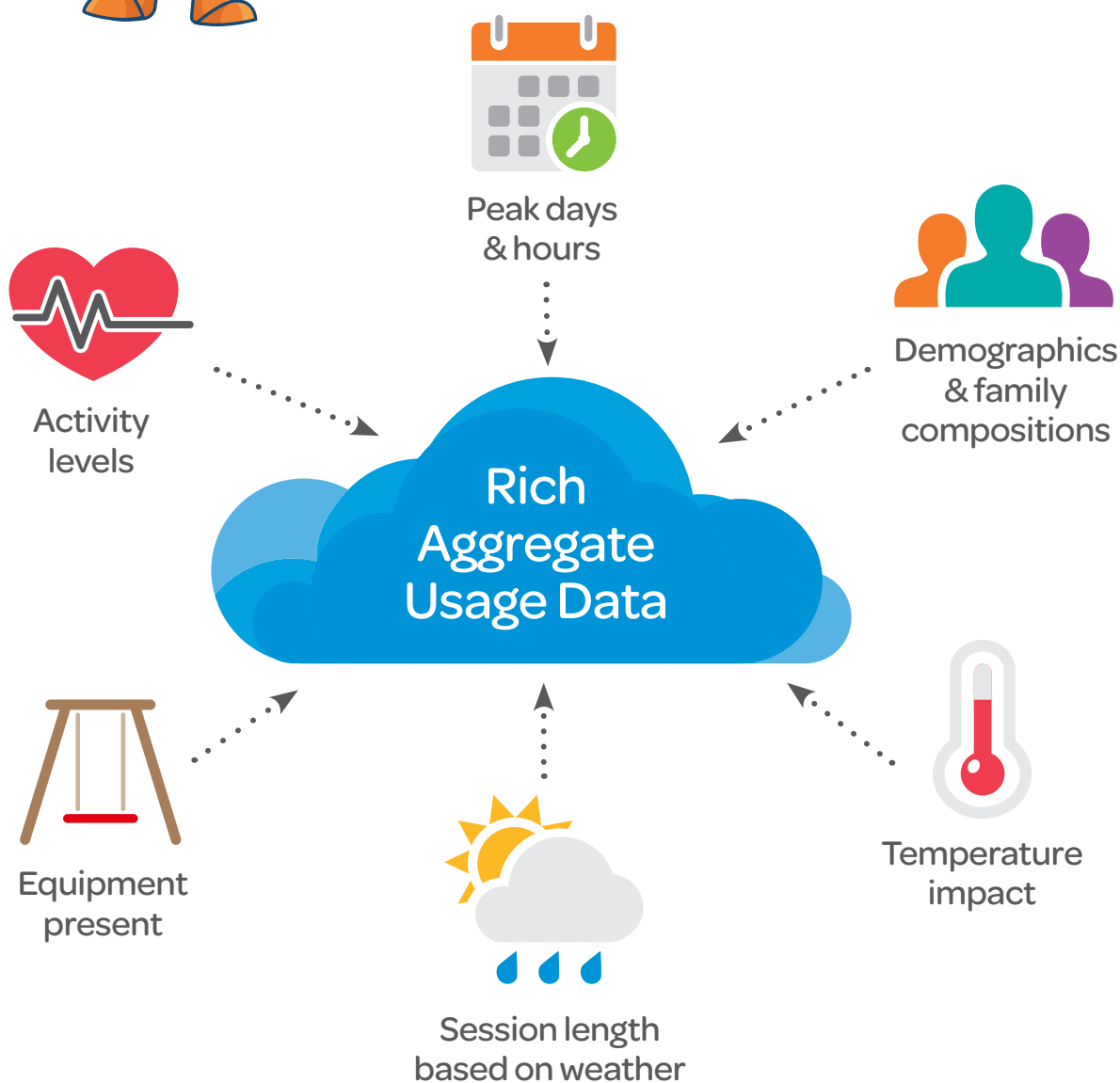
Plan for more fun

Councils often don't know who is using their playgrounds, and when. Any data has to be collected manually by sending researchers out to the playgrounds to do a count. That's time-consuming, expensive and doesn't provide accurate data over time.



PGC Smart Playgrounds equipped with Biba technology allow councils to identify and track who is using their playground and when. This rich aggregated usage data provides everything from the most popular days and times to demographics and family compositions. All data is anonymised and encrypted to protect residents' privacy – councils receive a detailed summary report showing trends and statistics for the past month.

The data helps Councils understand how, when and why their community is using their local playground, making decisions around future recreational spending easier and more effective.



A **plus** for parents and carers

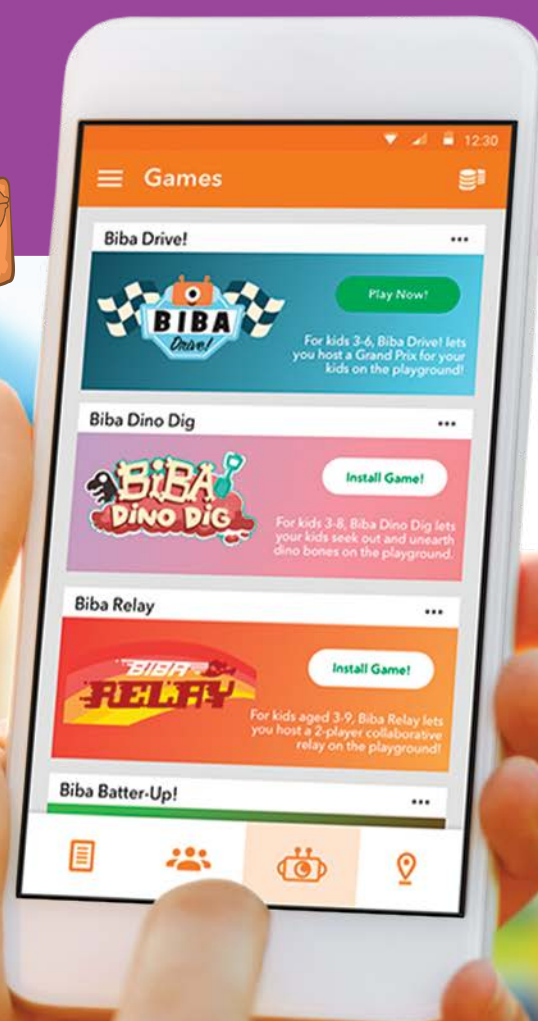
Parents and carers love PGC Smart Playgrounds and the Biba technology. Using the Play Tracker feature in the free Biba Playground Games App, adults can track their child's in-game progress, monitor how much physical activity they're getting and locate more smart playgrounds in the area.

The App also encourages parents and carers to make play a social experience. By using the Play Dates function, parents and carers can send invitations to other parents and their children to join in the fun!



Adults are an essential part of the smart playground experience. To avoid any accidents, parents hold onto their phone the whole time, and the games require children to interact with their supervising adult as part of the adventure. That puts parents in control of their child's experience and encourages a healthy lifestyle for the whole family.

Even better, the Biba technology has been developed to allow children with disabilities to participate too with an all inclusive game option.



Smart playgrounds. Simple installation.

We can either build a PGC Smart Playground from scratch or add the technology to an existing playground (Conditions apply). Upgrade kits are an awesome way to give your old playground a brand-new digital dimension.

Let's talk about setting up a PGC Smart Playground in your community and our subscription pricing model which provides access to ongoing software updates and new games.





Want to know **more?**

New Zealand
FREECALL 0800 805 256
Tel +646 348 9054
PO Box 14 Wanganui 4540

Australia
FREECALL 1800 092 897
53 Taylor Street
Bulimba QLD 4171

Global
+64 6 348 9054
sales@playgroundcentre.com
www.playgroundcentre.com